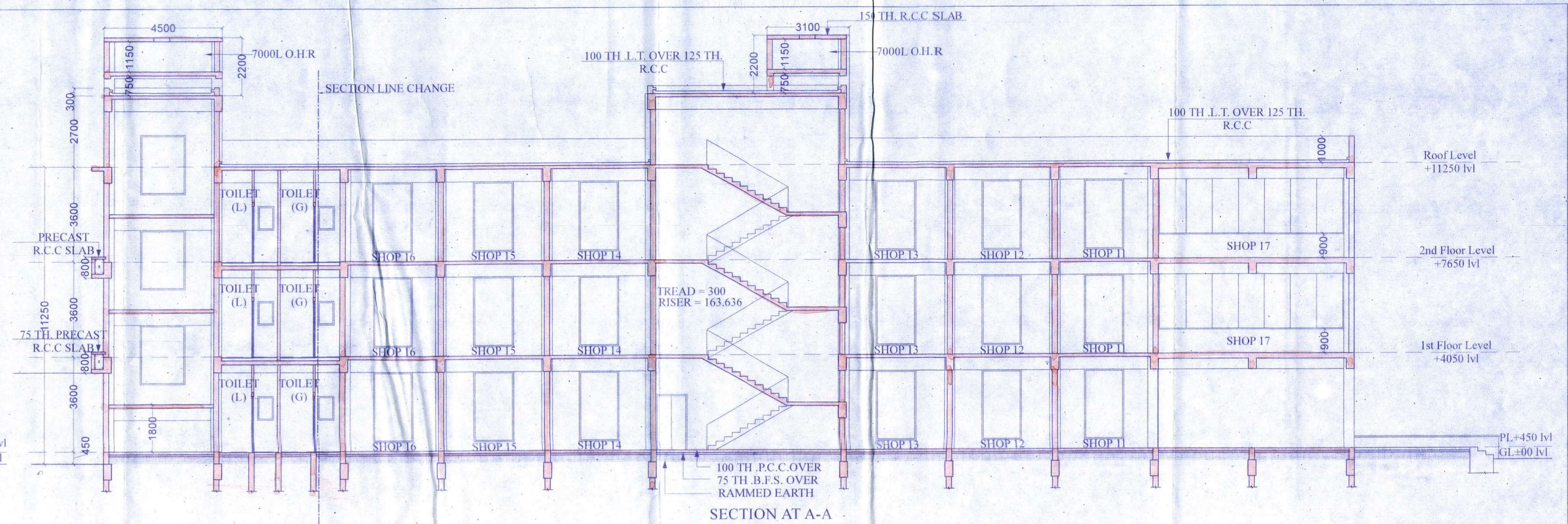
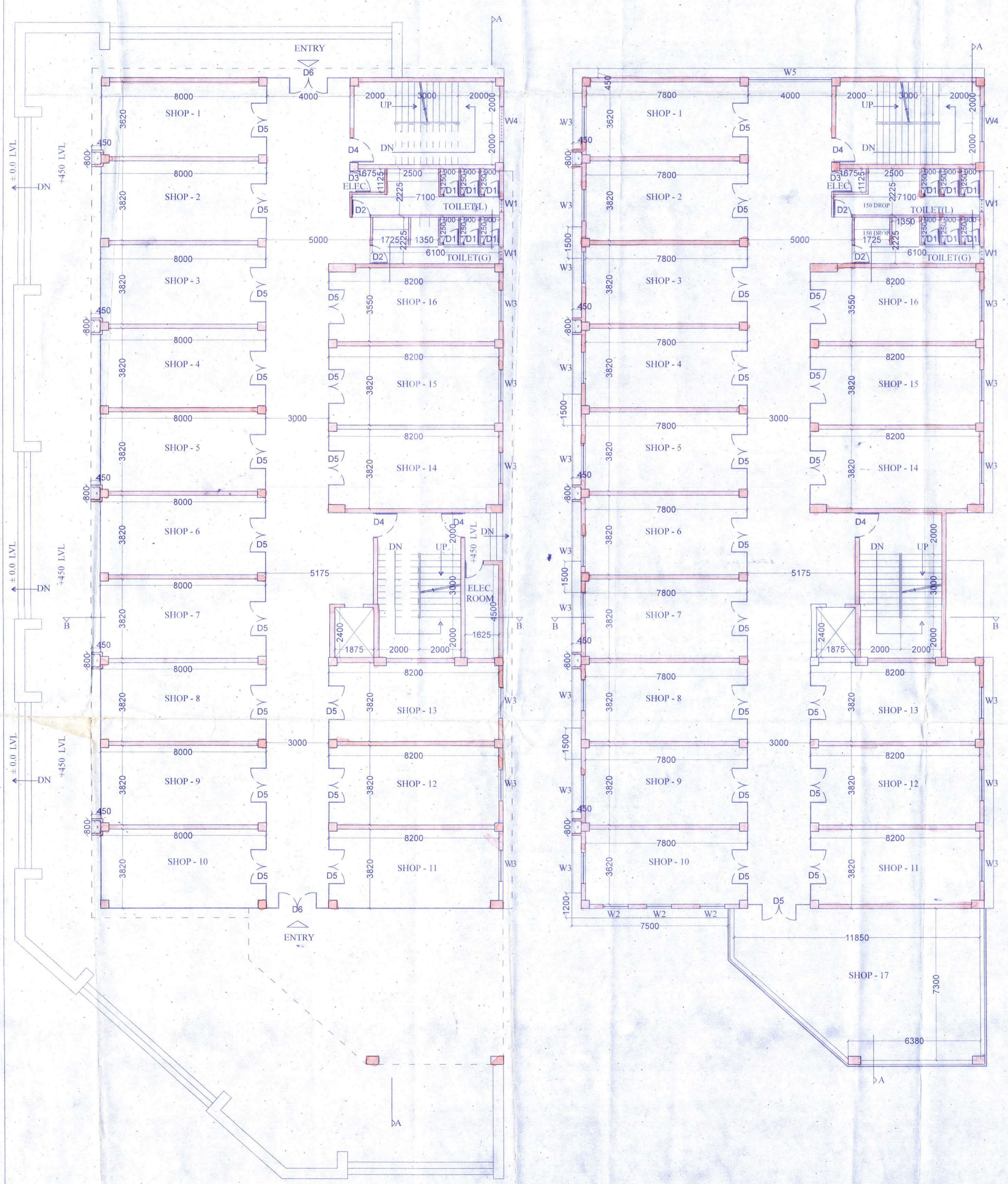


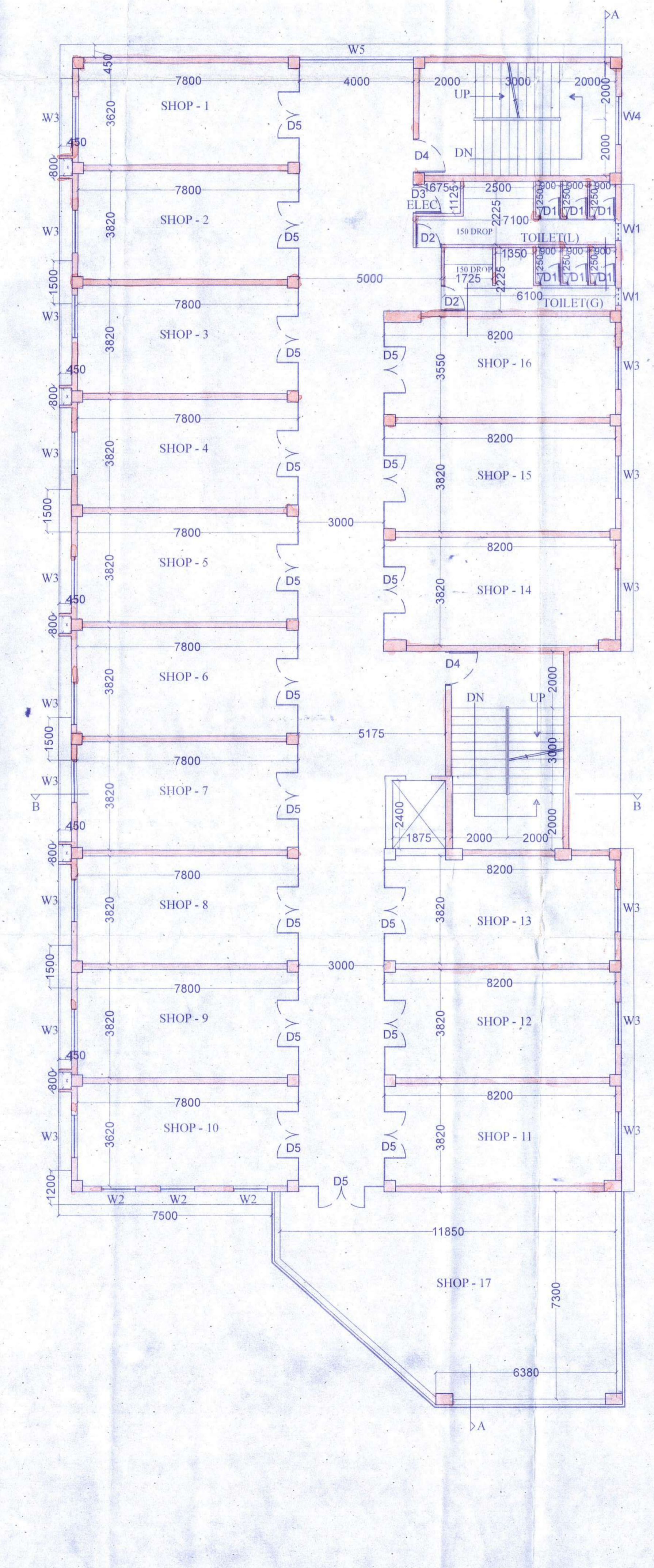
LEFT SIDE ELEVATION (SOUTH)



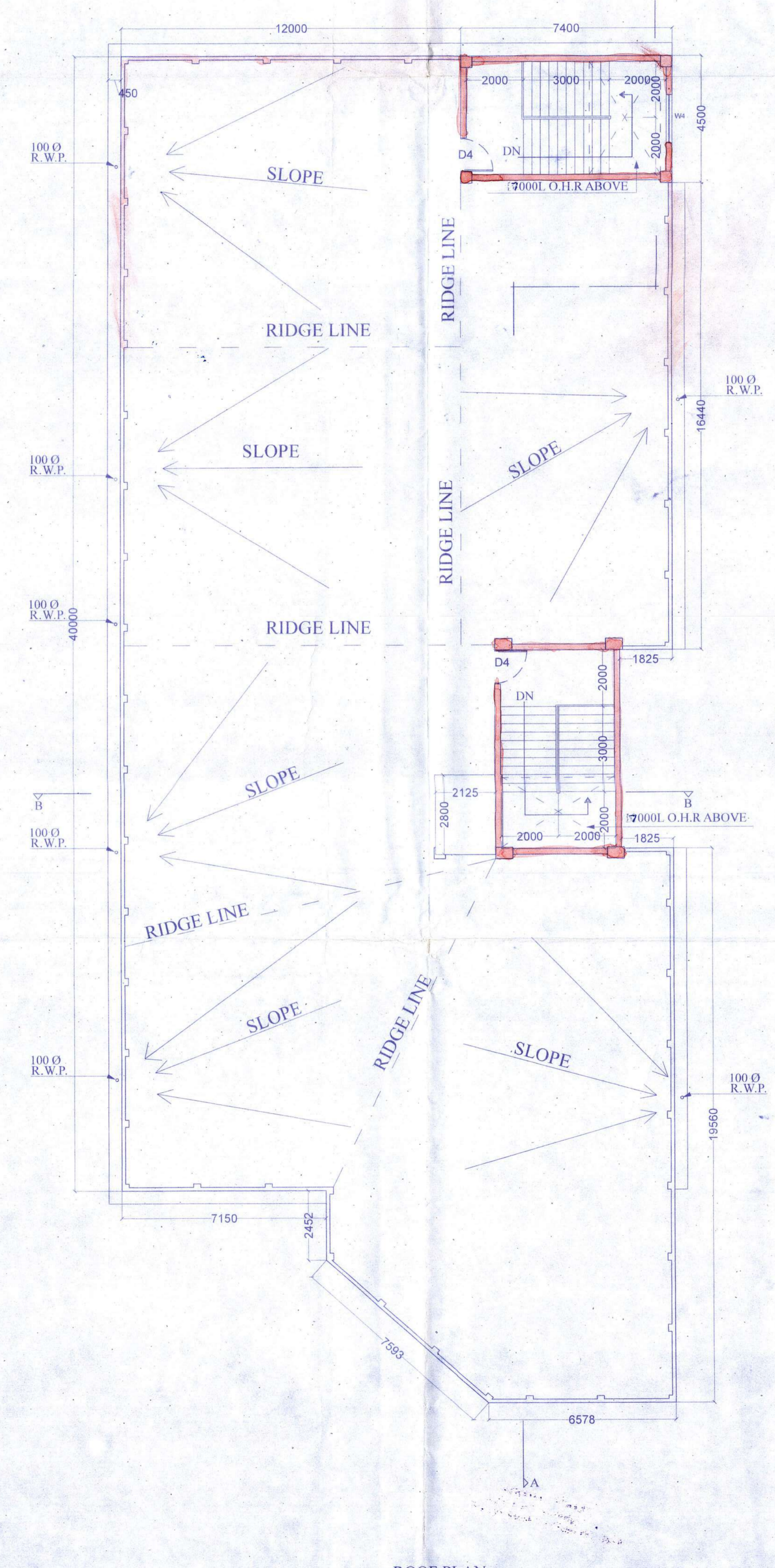
SECTION AT A-A



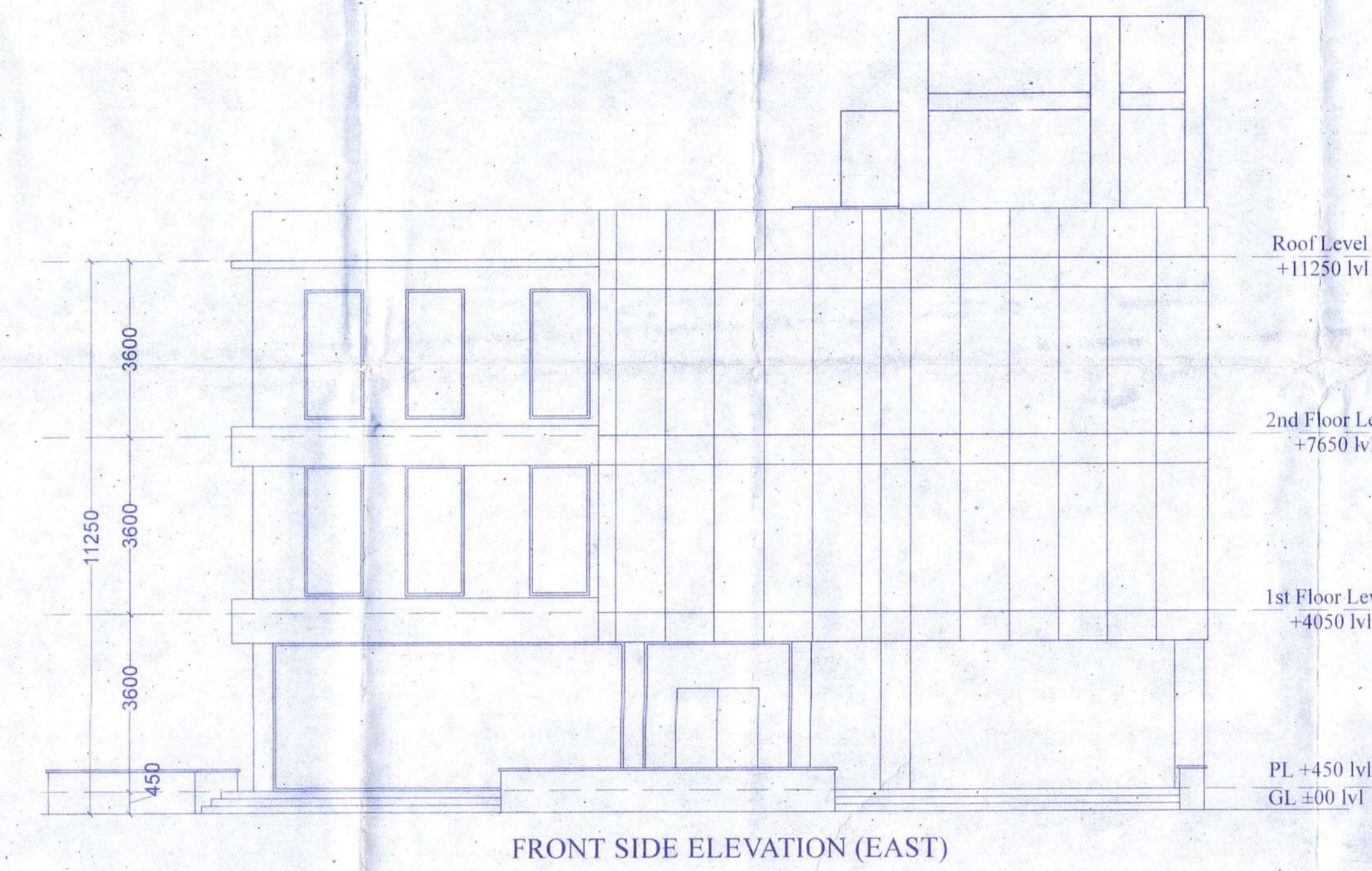
GROUND FLOOR PLAN



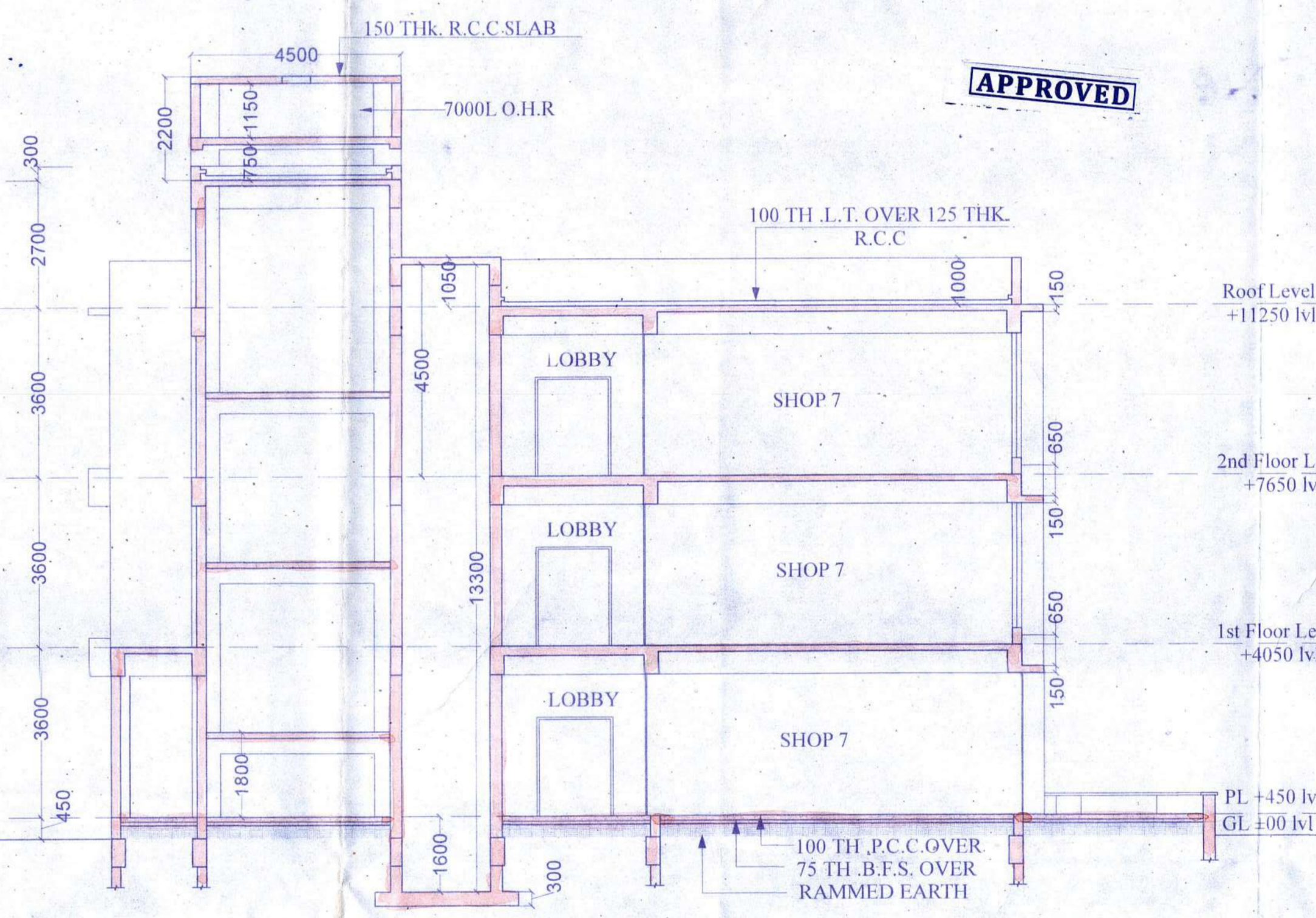
TYPICAL FLOOR PLAN (C1ST & 2ND)



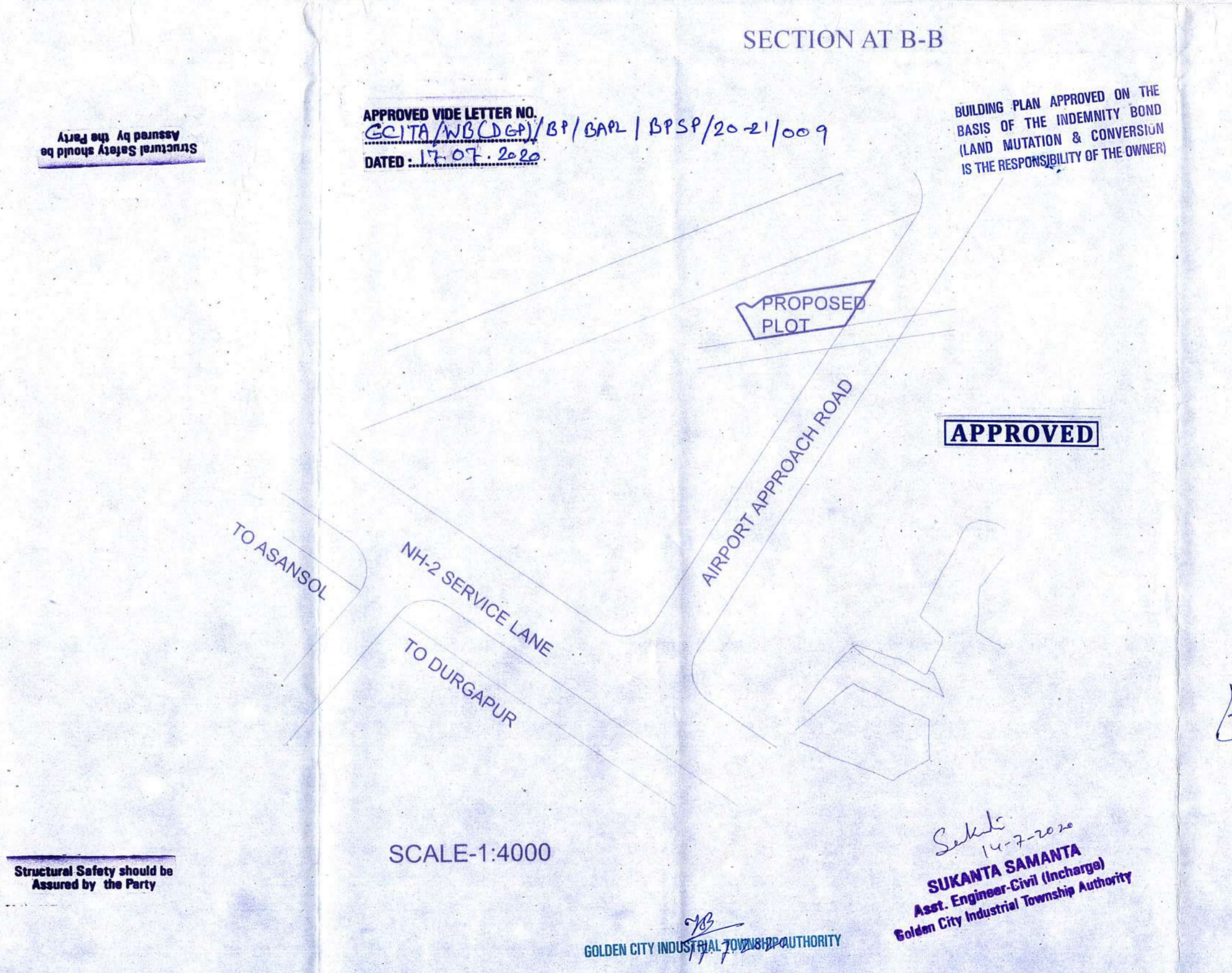
ROOF PLAN



FRONT SIDE ELEVATION (EAST)



SECTION AT B-B



SCALE: 1:4000

PROJECT-
 SANCTION PLAN OF 3 STORED COMMERCIAL BUILDING AT DAG NO. 1001(PART), 1002(PART), 1003(PART), 1004(PART), 1007(PART), 1100(PART), 1101(PART), 1103(PART), 1104(PART), 1106(PART), 1102/6177(PART), KHATIAN NO. 4009, J.L. NO. 52 MOUZA - ANDAL, P.S. ANDAL, BLOCK ANDAL DIST. PASCHIM BARDHAMAN, W.B.

TITLE
 GROUND FLOOR PLAN, TYPICAL FLOOR PLAN, ROOF PLAN, ELEVATIONS, SECTIONS, KEY PLAN

DRG. NO.	AT/MDHSDMM/4	DRAWN BY	
DATE	30.07.2019	CHECKED BY	
JOB. NO.	AT/192	APPROVED BY	
DESIGNED BY	ATELIER IX		
ISSUE STATUS	SANCTION		

NOTES
 1. ALL DIMENSIONS ARE IN MM.
 2. ALL EXTERNAL WALLS ARE 200 THK. & ALL INTERNAL WALLS ARE 100 & 75 THK.
 3. ALL OTHER SPECIFICATIONS CONFORMING I.S. CODE.

SCHEDULE OF DOORS AND WINDOWS

SCHEDULE OF DOORS		SCHEDULE OF WINDOWS	
TYPE	WIDTH x HEIGHT (L x H)	TYPE	WIDTH x HEIGHT (L x H)
D1	750 x 2100	W1	600 x 900
D2	900 x 2100	W2	1200 x 2650
D3	1025 x 2100	W3	1500 x 2950
D4	1200 x 2100	W4	1700 x 2250
D5	1600 x 2100	W5	4000 x 2650
D6	1800 x 2100	W6	3000 x 3500

AREA STATEMENT

1. AREA OF LAND-	3714.2 SQM
2. PERMISSIBLE GROUND COVERAGE @ 40% =	1485.68 SQM
3. CONSUMED GROUND COVERAGE @ 22.9% =	853.6 SQM
4. PARKING CALCULATION:	
TOTAL CAR PARKING REQUIRED	26 NO.
TOTAL CAR PARKING PROVIDED	39 NO.
F.A.R. CONSUMED =	60
HEIGHT OF BUILDING -	112.50 MM

OWNERS' CERTIFICATE

FLOOR	TOTAL FLOOR AREA (SQM)	STAIR AREA (SQM)	LOBBY AREA (SQM)	STAIR WELL (SQM)	LIFT WELL (SQM)	NET FLOOR AREA (SQM)
GROUND FLOOR	771.8	27.88	27.45	0.00	0.00	6.0
1ST FLOOR	840.89	27.88	27.45	0.00	4.48	6.0
2ND FLOOR	840.89	27.88	27.45	0.00	4.48	6.0
TOTAL FLOOR	2453.58	155.98	155.98	0.00	8.98	18

ENGINEERS' CERTIFICATE
 WE DO HEREBY CERTIFY THAT THE FOUNDATION AND SUPERSTRUCTURE OF THE BUILDING AT DAG NO. 1001(PART), 1002(PART), 1003(PART), 1004(PART), 1007(PART), 1100(PART), 1101(PART), 1103(PART), 1104(PART), 1106(PART), KHATIAN NO. 4009, J.L. NO. 52 MOUZA - ANDAL, P.S. ANDAL, BLOCK ANDAL DIST. PASCHIM BARDHAMAN, W.B. HAVE BEEN SO DESIGNED BY ME/US. THE FOUNDATION AND SUPERSTRUCTURE IS SAFE IN ALL RESPECT INCLUDING THE CONSIDERATION OF BEARING CAPACITY & SETTLEMENT OF SOIL ETC.

STRUCTURAL CONSULTANT
 KSP PROJECTS AND INFRASTRUCTURE CONSULTANTS
 P-60 RAJA BANGSARAY ROAD, KOLKATA-700029

ARCHITECT
 ATELIER IX
 ARCHITECTS PLANNERS LANDSCAPE & INTERIOR CONSULTANTS
 112, Anji Nagar, Kolkata-700019
 TEL: +91 33 65002844
 MAIL: atelierix@gmail.com

APPROVED
 BENGAL AEROTROPOLIS PROJECTS LTD.
 AUTHORISED SIGNATORY

APPROVED
 APPROVED VIDE LETTER NO. CA/2009/45/156 DATED - 13.07.2020
 APPROVED VIDE LETTER NO. CA/2009/45/156 DATED - 13.07.2020